



## Water recovery system



Save water, energy and chemicals.  
And recover your investment.

For and by a  
sustainable world

## WREC water recovery tanks

In today's world, the need to save water is more pressing than ever. Industrial laundries play a crucial role in this fight for sustainability, as efficient water consumption can make a big difference.

### **How can we contribute to saving water in an industrial laundry?**

Fagor Professional offers you its solution; industrial washers with low water consumption and water recovery tanks. These innovative machines are designed to optimise water use, with water savings of up to 70%, allowing your business to operate more sustainably and economically.

Find out how our solutions can help you reduce water consumption without compromising on quality of service.

# A solution for every customer

At Fagor Professional we adapt to the needs of each user, offering a wide range of options.

## Water reclaimers

Large capacity

- Ideal for industrial laundries.
- With capacity for 1,000 litres of water
- Combinable with 1, 2 or 3 tanks
- Possibility to connect more than one washer per tank



MODEL	TANK CAPACITY (LITRES)	SUITABLE FOR WASHERS
WREC-1000	1000	LA/LN-35/45/60/80 and LA-100/120 LBS-27/35/50/70/100

## Water reclaimers

Small and medium capacity

- Ideal for small laundries with limited space
- 80 to 150-litre capacities
- Models with 1, 2 or 3 tanks
- Only one washer can be connected per WREC model



MODEL	NO. TANKS	TANK CAPACITY (LITRES)	SUITABLE FOR WASHERS
WREC-80 T1	1	80	LA/LN-11/14/18 LMED-16
WREC-80 T2	2	80	
WREC-80 T3	3	80	
WREC-150 T1	1	150	LA/LN-22/28 LMED-22
WREC-150 T1	2	150	
WREC-150 T3	3	150	

# WREC-100 water reclaimers

## Large capacity

Ideal for industrial laundries



## High performance

### Large capacity

---

With a storage capacity of up to 1,000 litres.

### Versatility

---

- Can be combined with and connected to 1, 2 or 3 tanks.
- 1 or more washers can be connected to the tanks.
- The tanks can be installed on the sides or above, with an optional platform.

### Robustness

---

- Made of high-density polyethylene and external reinforcement with galvanised steel structure.
- Interior designed with rounded corners to prevent the accumulation of dirt and facilitate cleaning.





## Efficiency

### Water savings of up to 40-70%\*

---

Thanks to the reuse of water at different stages of the washing and rinsing process.

### Energy savings of up to 40%\*

---

Thanks to the reduction of the demand for conventional pumping and pressure systems, which are processes that require a considerable amount of energy.

### Chemical savings

---

By optimising the use of water at different stages of the wash, WREC-1000s reduce the need for chemicals to treat the water, taking advantage of its purity in each cycle.

\* These percentages may vary depending on types of programmes, garments and processes, among others.





# Installation

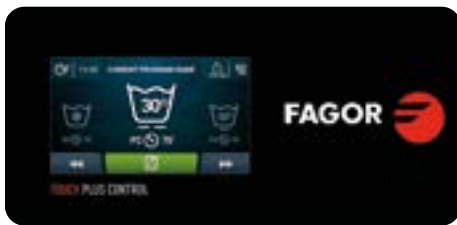
The installation phase is a critical process in any laundry and requires an analysis prior to its execution.

## Requirements to consider for the installation

---

**01 Touch Plus Control TP2**

You must have a latest generation Fagor washer with Touch Plus Control TP2.



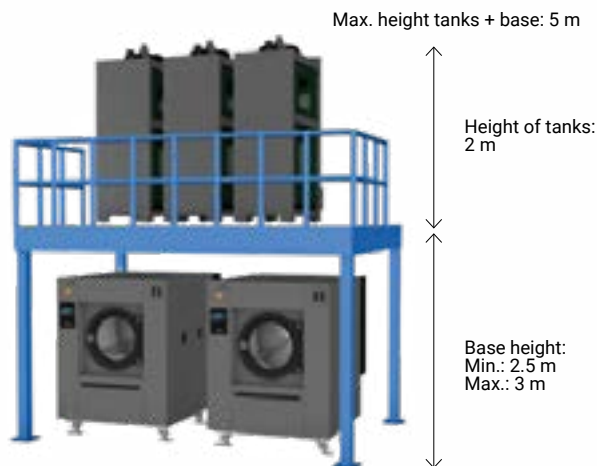
**02 "Tank ready" option**

To facilitate the installation, order the configurable "tank ready" option so that the washer is factory assembled with the necessary elements.

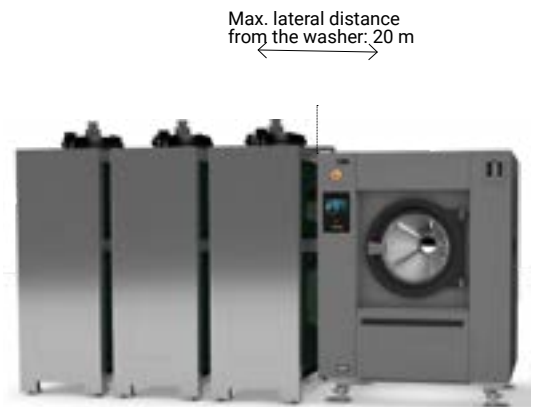
**03 Location of the tanks**

Consider placing the tanks next to or on top of the washers to be within the operating parameters.

ABOVE OPTION



SIDE OPTION



04 **Water and electricity connection required**

Connections not included with the tank.



05 **Make connections between the machines and tanks**

"Hose and accessories kit" available as an option to connect 1 washer to 3 tanks.

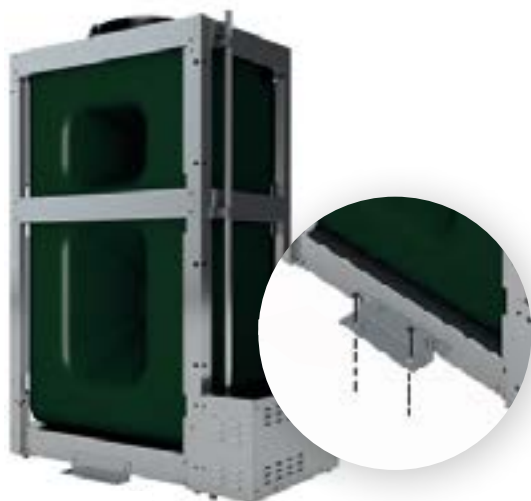
Each kit includes:

- 25-metre pipe.
- 25-metre electric hose.
- 6 units, T-connection.
- 12 clamps.



\*\* Example of electrical connection cables for 3 washers and 3 tanks

\*\*\* Water and electrical connections between washers and tanks are not supplied



**Fastening**

Holes are provided for easy fastening to the floor.



# Maintenance

The maintenance of the tanks and their elements is an important part of the future and daily operation of the tanks.

## Maintenance guidelines to consider

---

- ✓ Clean the tank pump filter
- ✓ Clean the washer pump filter
- ✓ Clean the WREC-1000 tank:  
This should be done with pressurised water from the top of the tank
- ✓ Monitor the water quality
- ✓ Perform a chemical control



## Touch Plus Control

Managing the tanks is easy to do via the Touch Plus Control TP2 control of the washers, configuring the tank filling and emptying phases in the different wash programmes.

### Choice of water destination

It is possible to choose whether the water from the drum is to be used for draining or for any installed tank.

- **D1: draining through the main valve:**

This valve will discharge the water towards the installation's drain. The water will not be recovered.

- **T1 / T2 / T3: draining to the tank:**

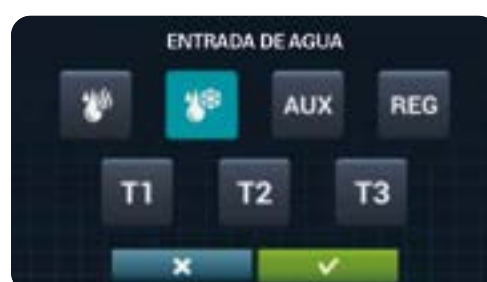
If you have tanks installed, you can also decide to send the water from the drum to one of the tanks. You need only select the tank you want to store the water in.



### Choice of water origin

You can choose the water inlets to fill the drum of the washer.

- Hot water inlet
- Cold water inlet
- Hot and cold water inlet, for faster filling with or without temperature control
- T1 / T2 / T3: the washer selects tank 1, 2 or 3 for the water inlet



The tanks are equipped with 2 water level sensors in each tank (maximum and minimum level). If the maximum level is reached, the tank will drain the excess water.

## Sustainable laundry

In a world where sustainability has become a priority, we present our innovative sustainable laundry system made up of efficient equipment connected to **FagorKonnnect**, which allows you to manage and monitor the consumption of resources in real time thanks to the advanced technology of LEMS by Onnera.



LEMS by Onnera

Full consumption control.

With the new LEMS pulse concentrator and **FagorKonnnect** (IoT), you can retrieve all the data and analyse the efficiency of your washers and WREC-1000 water recovery tanks, such as water, energy and other resources at your industrial laundry.



WREC water recovery tanks are essential in a sustainable laundry and can be integrated into the LEMS system.



 **FagorKonnnect**  
Laundry

The data collected by LEMS, together with other metrics and values of your laundry, are integrated into the FagorKonnnect platform, which can be accessed to monitor and control your business live and obtain detailed management, hygiene and efficiency reports.



# WREC-80/150 water reclaimers

## Small and medium capacity

Ideal for small laundries and those with limited space.



## High performance

### Large capacity

---

80 or 150-litre tanks.

### Versatility

---

Models with 1, 2 or 3 tanks can be ordered depending on needs.

### Robustness

---

- Made of high-density polyethylene and external reinforcement with skinplate panel structure, stainless steel aesthetics.
- Interior designed with rounded corners to prevent the accumulation of dirt and facilitate cleaning.

### Compact

---

Small dimensions that require little space.

### Wet cleaning

---

Possibility to use the tanks for pre-mixing water and chemicals, avoiding direct contact of delicate garments with chemicals.



WREC-80/150 T1



WREC-80/150 T2



WREC-80/150 T3

## Efficiency

### Water savings of up to 40-70%\*

Thanks to the reuse of water at different stages of the washing and rinsing process.

### Chemical savings

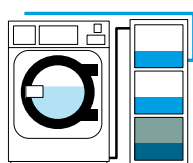
By optimising the use of water at different stages of the wash, WREC-1000s reduce the need for chemicals to treat the water, taking advantage of its purity in each cycle.

### Energy savings of up to 40%\*

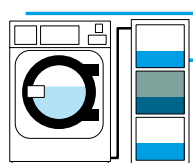
Thanks to the reduction of the demand for conventional pumping and pressure systems, which are processes that require a considerable amount of energy.

\* These percentages may vary depending on types of programmes, garments and processes, among others.

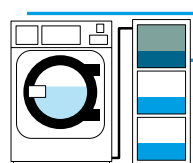
UP TO  
**-70%**  
water consumption  
in 3 rinses



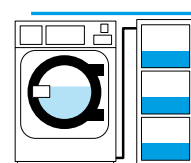
**Tank 1**  
Water from the last rinse.



**Tank 2**  
Water from the first and/or second rinse.



**Tank 3**  
Water from the wash cycle for following pre-wash.



**Save water**  
Pre-wash + Wash + 3 Rinses  
**Up to 70%.**



## Installation and maintenance

### Easy to install

---

Plug&Play system for an easy and uncomplicated connection between washer and tanks.

Note: provided that the washer is ordered configured with the "tank ready" option.

### Easy to clean

---

- Self-cleaning of tanks with the Touch Plus Control TP2 preset programmes
- Tanks easy to remove and clean

### Requirements to consider for the installation

---

01 **Touch Plus Control TP2**

You must have a latest generation Fagor washer with Touch Plus Control TP2.

02 **"Tank ready" option**

To facilitate the assembly, order the configurable "tank ready" option so that the washer is factory assembled with the necessary elements.

03 **Location of the tanks**

Consider placing the tanks next to the washers.

04 **Electrical connection required**

Connections not included with the tank.



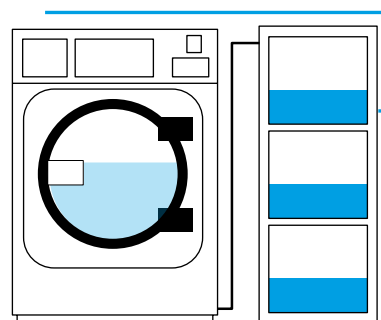
## Touch Plus Control

The Touch Plus Control of the washers is what manages the control and optimisation of water recovery in tanks.

### Simple tank management

The management of water recovery in tanks is very simple and intuitive using the washer's Touch Plus Control TP2.

- You can choose the water inlet and outlet for filling and emptying the drum.
- 2 water level sensors in each tank (maximum and minimum level).
- The water recovery system fills each tank through fill valves.
- Possibility to create washer programmes for the self-washing of tanks.



**ONNERA GROUP**

