



IRONING AND FOLDING

FLATWORK IRONERS ROLLER Ø 500 PS-50-200/260/330 TP2

CHARACTERISTICS

TP2

- User friendly and totally programmable 7" TP2.
- 38 available languages.
- 5 preset programs, possibility to create unlimited ones.
- USB connection. PC software free of charge for programming, traceability, data analysis.

EFFICIENCY

- Good heat conduction thanks to the material of the roll and its thickness: greater control of the energy expenditure.
- Automatic shutdown at 80°C.
- Fumes circulation circuit from the bottom reducing the energy consumption.
- Radiant gas model: production improved by 25%.
- Powerful exhaust system.

VERSATILITY

- Radiant gas model: flexible, suitable for high altitude installations.
- Optional built-in length folder with or without rear exit option.

ROBUSTNESS

- Roll driving by speed inverter
- Stainless steel and grey skinplate panels.
- Nomex quality feeding and ironing belts: high temperatures resistant.
- Chrome plate roll as option: anticorrosive, more durable.

ERGONOMICS

- Acoustic comfort : <65 dB.
- Appropriate operating height: 1120 mm feeding belts.
- Compact dimensions.

MAINTENANCE

- Easy access to all components on both sides of the machine.
- Connections: electrical connection and air extraction.
- Complete technical menu: statistics, autotest, data recovery for technician and maintenance.
- Remote communication: faster intervention.

OTHERS

- Dries and irons flat linen in a single operation.
- Front feeding and return.
- Built-in cool down system.
- Polished steel roll Ø 500 mm.
- Working width: 2000, 2600 and 3300 mm.
- Electric, gas or steam heating.
- Frequency Inverter for the ironing speed control.

OPTIONS

- SMART SYSTEM: automatic regulation of ironing speed according to residual moisture, energy economizer.
- OPTIMALFEEDING: automatic adjustment of ironing speed, lowered for feeding and increased for higher production up to 8 m/min.
- Chrome plate cylinder.
- Rear exit.
- Integrated lengthwise folder.
- Crossfolder with stacker.
- Marine tension 440V III 60 Hz without N. (electric models)
- Tension 230V III 50-60 Hz.
- MARITIME wooden packing.

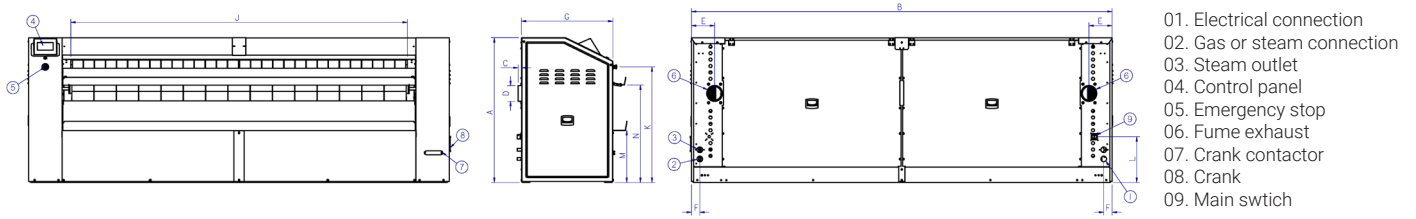


TECHNICAL DATA

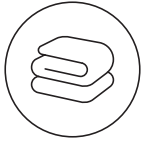
FLATWORK IRONERS | ROLLER Ø 500 | PS-50-200/260/330 TP2

	UNIT.	PS-50/200 TP2	PS-50/260 TP2	PS-50/330 TP2			
GENERAL DETAILS							
Theoretical production (electric)*	Kg/h	68	84	115			
	Lb/h	150	185	254			
Theoretical production (atmos gas)*	Kg/h	68	84	115			
	Lb/h	150	185	254			
Theoretical production (radiant gas)*	Kg/h	82	100	138			
	Lb/h	181	220	304			
Theoretical production (steam)*	Kg/h	68	84	115			
	Lb/h	150	185	254			
Evaporation power	l/h	37	45	62			
	USgallon/h	9,7	11,9	16,4			
Ø Roll	mm	500	500	500			
	inch	19,69	19,69	19,69			
Working width	mm	2.000	2.600	3.300			
	inch	78,74	102,36	129,92			
Height floor-feeding belts	mm	1.120	1.120	1.120			
	inch	44,09	44,09	44,09			
Working speed	m/min	0,5 - 8	0,5 - 8	0,5 - 8			
	ft/min	1,6 - 26	1,6 - 26	1,6-26			
Electronic control		TP2	TP2	TP2			
N° Programs	N°	5	5	5			
Length folder	N°	Opt	Opt	Opt			
Large surface contact with linen	°	310	310	310			
POWER							
Electric heating power	kW	31,5	40,5	54			
Total electric power (Electric model)	kW	32,12	41,37	54,87			
Gas heating power	kW	40	55	69			
Total electric power (Gas model)	kW	0,62	0,87	0,87			
Steam heating power	kW	50	64	81			
Total electric power (Steam model)	kW	0,62	0,87	0,87			
Steam consumption	kW	50	67	85			
Roll motor power	kW	0,37	0,37	0,37			
Fan motor power	kW	0,25	0,25 x 2	0,25 x 2			
Additional electric power for folder	kW	0,56	0,56	0,56			
Additional electric power for folder rear exit	kW	0,74	0,74	0,74			
CONNECTIONS							
Tension 230V - I + N + T	n° x mm²/A	-	3 x 2,5 / 10A	-	3 x 2,5 / 10A	-	3 x 2,5 / 10A
	n° x AWG/A	-	3 x 13 / 10A	-	3 x 13 / 10A	-	3 x 13 / 10A
Tension 230V - III + T	n° x mm²/A	4 x 25 / 100A	4 x 2,5 / 10A	4 x 25 / 125A	4 x 2,5 / 10A	4 x 35 / 160A	4 x 2,5 / 10A
	n° x AWG/A	4 x 3 / 100A	4 x 13 / 10A	4 x 3 / 125A	4 x 13 / 10A	4 x 2 / 160A	4 x 13 / 10A
Tension 400V - III + N + T	n° x mm²/A	5 x 16 / 63A	5 x 2,5 / 10A	5 x 16 / 80A	5 x 2,5 / 10A	5 x 25 / 100A	5 x 2,5 / 10A
	n° x AWG/A	5 x 5 / 63A	5 x 13 / 10A	5 x 5 / 80A	5 x 13 / 10A	5 x 3 / 100A	5 x 13 / 10A
Ø Gas inlet	BSP	1"		1"		1"	
Ø Steam inlet	BSP	3/4"		3/4"		3/4"	
Ø Condensed (steam models)	BSP	1/2"		1/2"		1/2"	
DIMENSIONS / PACKING DIMENSIONS							
Net width / Gross width	mm	2.845/3.145		3.445/3.745		4.145/4.445	
	inch	112/ 123,8		135,6/ 147,4		163,2/175,0	
Net depth / Gross depth	mm	1.070/1.153		1.070 /1.153		1.070 / 1.153	
	inch	42,1/45,4		42,1/ 45,4		42,1/45,4	
Net height / Gross height	mm	1.420/1.672		1.420/1.672		1.420/1.672	
	inch	55,9/ 65,8		55,9/ 65,8		55,9/65,8	
Net weight / Gross weight	Kg	930/972		1.180/1.470		1.430/1.480	
	Lb	2050/2143		2601/ 3241		3153/3263	
Volume	m³	4,32/6,06		5,23/7,22		6,30/8,57	
	f³	153/214		185/ 255		222/303	
OTHERS							
Fume outlet	N°	1		2		2	
Ø Fume outlet	mm	153		153		153	
	inch	6		6		6	
Air flow	m³/h	600		1.200		1.200	
	cfm	353		706		706	
Noise Level	dB	65		65		65	

*45 % moisture



	A	B	C	D	E	F	G	H	I	J	K	L	M	N
PS-50/200 TP2	1.420	2.845	36	Ø152	228	83	897	2.160	1.079	2.004	1.128	447	509	952
PS-50/260 TP2	1.420	3.445	36	Ø152	228	83	897	2.760	1.079	2.604	1.128	447	509	952
PS-50/330 TP2	1.420	4.145	36	Ø152	228	83	897	3.460	1.079	3.304	1.128	447	509	952



IRONING AND FOLDING

FLATWORK IRONERS ROLLER Ø 650 PS-65-200/260/330 TP2

CHARACTERISTICS

TP2

- User friendly and totally programmable 7" TP2
- 38 available languages
- 5 preset programs, possibility to create unlimited ones
- Reverse roll standard
- USB Connection. PC software free of charge for programming, traceability, data analyses...

EFFICIENCY

- SMART SYSTEM: automatic regulation of ironing speed according to residual moisture, energy economizer (standard)
- HPS: automatic adjustment of ironing speed, lowered for feeding and increased for higher production up to 15 m/min. (standard)
- Good heat conduction thanks to the roll material and thickness: greater control of energy expenditure
- Automatic shutdown at 80°C
- Fumes circulation circuit from the bottom reducing energy consumption
- Radiant gas model: production improved by 25 %
- Powerful exhaust system

VERSATILITY

- Radiant gas model: flexible, suitable for high altitude installations
- Optional built-in length folder with or without rear exit option

ROBUSTNESS

- Roll driving by speed inverter
- Stainless steel and grey skinplate panels
- Nomex quality feeding and ironing belts: high temperatures resistant
- Chrome plate roll as option: anticorrosive, more durable

ERGONOMICS

- Acoustic comfort : <65 dB
- Appropriate operating height: 1120 mm feeding belts
- Compact dimensions

MAINTENANCE

- Easy access to all components on both sides of the machine
- Connections : electrical connection and air extraction.
- Complete technical menu: statistics, autotest, data recovery for technician and maintenance
- Remote communication: faster intervention

OTROS

- Dries and irons flat linen in a single operation
- Front feeding and return
- Built-in cool down system
- Polished steel roll ø 650 mm
- Working width: 2000, 2600 and 3300 mm
- Electric, radiant gas or steam heating

OPTIONS

- Built-in lengthwise folder
- Rear exit (only with folder)
- Chrome plate cylinder
- PL Cross folder PL-CROSS
- Marine tension 440V III 60 Hz without N (electric models)
- Tension 230V III 50-60 Hz
- MARITIME wooden packing

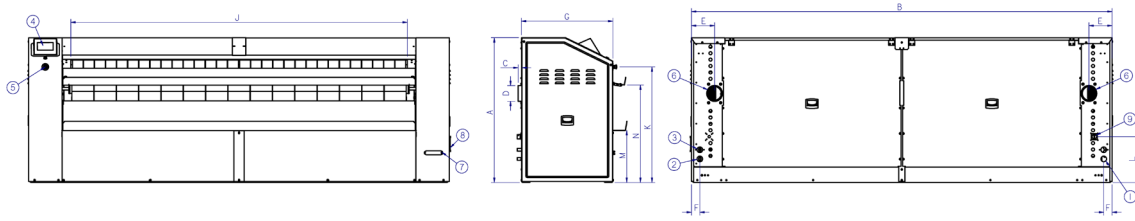


TECHNICAL DATA

FLATWORK IRONERS | ROLLER Ø 650 | PS-65-200/260/330 TP2

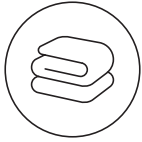
	UNIT.	PS-65/200 TP2	PS-65/260 TP2	PS-65/330 TP2			
GENERAL DETAILS							
Theoretical production (electric)*	Kg/h	90	115	160			
	Lb/h	198	254	353			
Theoretical production (radiant gas)*	Kg/h	104	132	184			
	Lb/h	229	291	406			
Evaporation power	l/h	47	59	83			
	USgallon/h	12,4	15,7	21,9			
Ø Roll	mm	650	650	650			
	inch	25,59	25,59	25,59			
Working width	mm	2.000	2.600	3.300			
	inch	78,74	102,36	129,92			
Height floor-feeding belts	mm	1.120	1.120	1.120			
	inch	44,09	44,09	44,09			
Working speed	m/min	0,5 - 15	0,5 - 15	0,5 - 15			
	ft/min	1,6 - 49	1,6 - 49	1,6 - 49			
Electronic control		TP2	TP2	TP2			
N° Programs	N°	5	5	5			
Length folder	N°	Opt	Opt	Opt			
Large surface contact with linen	°	310	310	310			
POWER							
Electric heating power	kW	42	54	72			
Total electric power (Electric model)	kW	43,05	55,05	73,05			
Gas heating power	kW	52	69	78			
Total electric power (Gas model)	kW	1,05	1,05	1,05			
Steam heating power	kW	60	76	97			
Total electric power (Steam model)	kW	1,05	1,05	1,05			
Steam consumption	kW	60	80	102			
Roll motor power	kW	0,55	0,55	0,55			
Fan motor power	kW	0,25 x 2	0,25 x 2	0,25 x 2			
Additional electric power for folder	kW	0,56	0,56	0,56			
Additional electric power for folder rear exit	kW	0,74	0,74	0,74			
CONNECTIONS							
Tension 230V - I + N + T	n° x mm²/A	-	3 x 2,5 / 10A	-	3 x 2,5 / 10A	-	3 x 2,5 / 10A
	n° x AWG/A	-	3 x 13 / 10A	-	3 x 13 / 10A	-	3 x 13 / 10A
Tension 230V - III + T	n° x mm²/A	4 x 25 / 125A	4 x 2,5 / 10A	4 x 35 / 160A	4 x 2,5 / 10A	-	4 x 2,5 / 10A
	n° x AWG/A	4 x 3 / 125A	4 x 13 / 10A	4 x 2 / 160A	4 x 13 / 10A	-	4 x 13 / 10A
Tension 400V - III + N + T	n° x mm²/A	5 x 16 / 80A	5 x 2,5 / 10A	5 x 25 / 100A	5 x 2,5 / 10A	5 x 25 / 125A	5 x 2,5 / 10A
	n° x AWG/A	5 x 5 / 80A	5 x 13 / 10A	5 x 3 / 100A	5 x 13 / 10A	5 x 3 / 125A	5 x 13 / 10A
Ø Gas inlet	BSP	1/2"	1/2"	1/2"	1/2"	1/2"	1/2"
Ø Steam inlet	BSP	3/4"	3/4"	3/4"	3/4"	3/4"	3/4"
Ø Condensed (steam models)	BSP	1/2"	1/2"	1/2"	1/2"	1/2"	1/2"
DIMENSIONS / PACKING DIMENSIONS							
Net width / Gross width	mm	2.845/3.145	3.445/3.745	4.145/4.445			
	inch	112/123,8	135,6/147,4	163,2/175			
Net depth / Gross depth	mm	1.070/1.153	1.070 / 1.153	1.070 / 1.153			
	inch	42,1/45,4	42,1/45,4	42,1/45,4			
Net height / Gross height	mm	1.420/1.672	1.420/1.672	1.420/1.672			
	inch	55,9/65,8	55,9/65,8	55,9/65,8			
Net weight / Gross weight	Kg	1.189/1.231	1.517/1.567	1.765/1.815			
	Lb	2.621/ 2.714	3.344/3.455	3.891/4.001			
Volume	m³	4,32/6,06	5,23/7,22	6,30/8,57			
	f³	153/214	185/255	222/303			
OTHERS							
Fume outlet	N°	2	2	2			
Ø Fume outlet	mm	153	153	153			
	inch	6	6	6			
Air flow	m³/h	1.200	1.200	1.200			
	cfm	706	706	706			
Noise Level	dB	65	65	65			

*45 % moisture



- 01. Electrical connection
- 02. Gas or steam connection
- 03. Steam outlet
- 04. Control panel
- 05. Emergency stop
- 06. Fume exhaust
- 07. Crank contactor
- 08. Crank
- 09. Main switch

	A	B	C	D	E	F	G	H	I	J	K	L	M	N
PS-65/200 TP2	1.420	2.845	36	Ø152	228	83	897	2.160	1.079	2.004	1.128	447	509	952
PS-65/260 TP2	1.420	3.445	36	Ø152	228	83	897	2.760	1.079	2.604	1.128	447	509	952
PS-65/330 TP2	1.420	4.145	36	Ø152	228	83	897	3.460	1.079	3.304	1.128	447	509	952

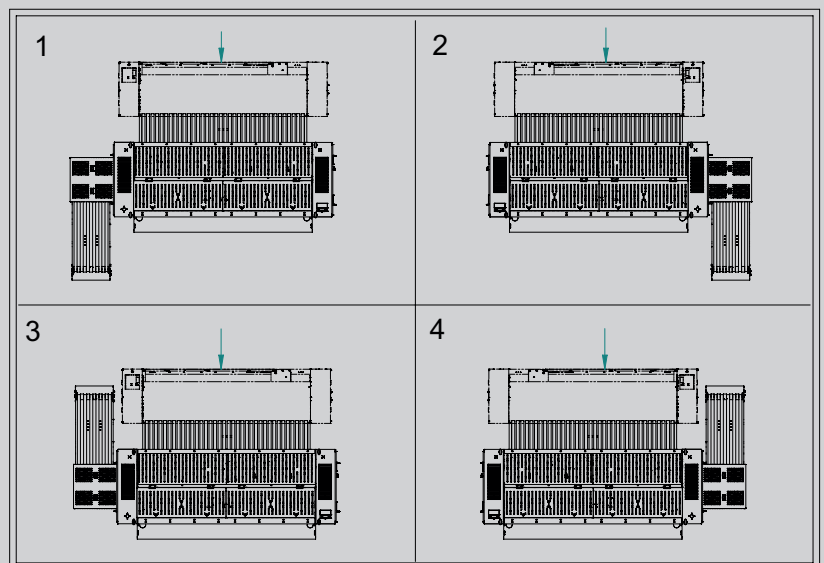
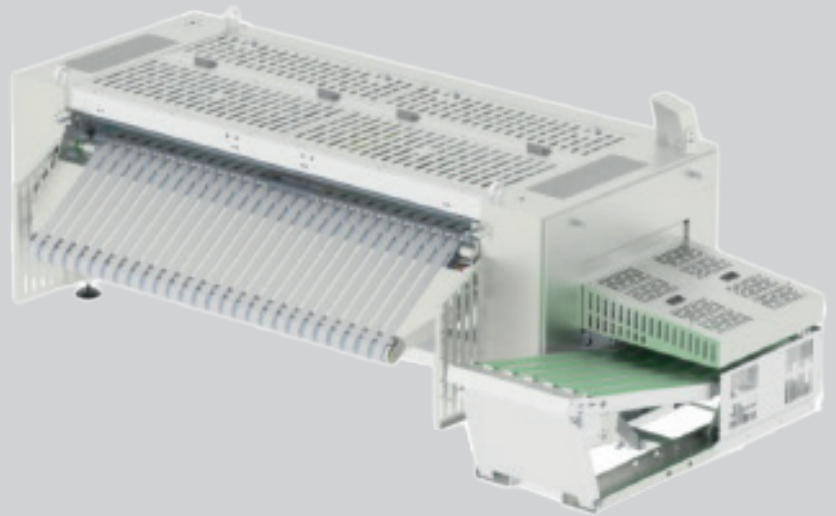


IRONING AND FOLDING

CROSS FOLDER AND STACKER PL CROSS-2000/2600/3300 TP2

FEATURES

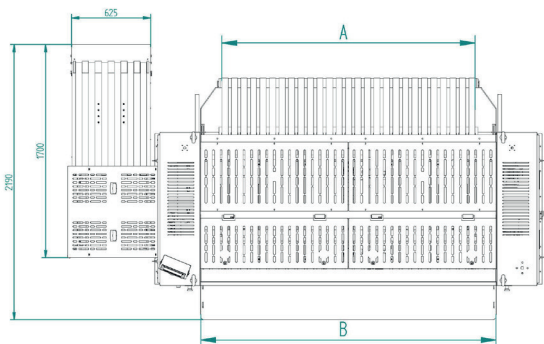
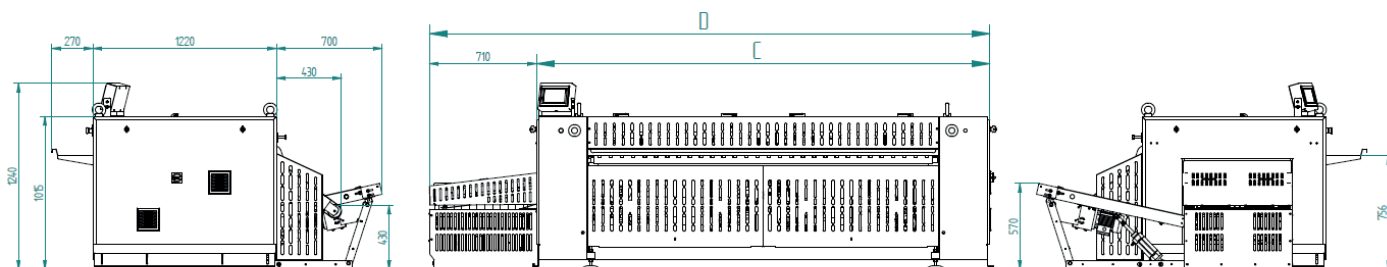
- Independent cross folder with stacker.
- Working width: 2000 - 2600 - 3300 mm.
 - Speed 9mt/min.
 - 1 crossfold working lanes.
 - Crossfolds by air jet and rotating rolls.
 - Contror Touch Plus TP2 panel.
 - 20 variable programs with PLC.
 - Selection chance of side and exit direction of stacker conveyor.
 - Transportation belts in cotton.
 - Safety alarm for cross-folds obstructions.
 - Calculation of partial and total production.
 - Totally personalized folding parameters.
 - Stacking chance from 1 to 10.



TECHNICAL DATA

CROSS FOLDER AND STACKER | PL CROSS-2000/2600/3300 TP2

DATOS TÉCNICOS	UNIT.	PL CROSS-2000	PL CROSS-2600	PL CROSS-3300
GENERAL DETAILS				
Working width	mm	710	2600	3300
Ironing speed	mt/min	9	9	9
Nº of programmes	Kg/h	20	20	20
FOLDING				
1 lane - crossfold	Nº	1-2-3	1-2-3	1-2-3
POWER				
Power	kW	1,5	1,5	1,5
Voltage 400V - III + N + T	Hz	50Hz // Amp 3,7	50Hz // Amp 3,7	50Hz // Amp 3,7
Voltage 230V-III + T	Hz	50Hz // Amp 6,3	50Hz // Amp 6,3	50Hz // Amp 6,3
FOLDER DIMENSIONS / PACKAGING DIMENSIONS				
Net width / gross width	mm	3.010 / 3.110	3.460 / 3.560	4.160 / 4.260
Net depth / gross depth	mm	1.920 / 2.020	1.920 / 2.020	1.920 / 2.020
Net height / gross depth	mm	1.240 / 1.340	1.240 / 1.340	1.240 / 1.340
Net / gross weight	Kg	1.150 / 1.200	1.400 / 1.450	1.680 / 1.730
STACKER DIMENSIONS / PACK DIMENSIONS				
Net width / gross width	mm	710 / 810	710 / 810	710 / 810
Net depth / gross depth	mm	7100 / 1800	1700 / 1800	1700 / 1800
Net height / gross depth	mm	620 / 720	620 / 720	620 / 720
Net weight / gross weight	Kg	180 / 210	180 / 210	180 / 210
OTHERS				
Compressed air needed (6,5 bar)	Nl/h	3500	3500	3500



	A	B	C	D
PL CROSS 2000	2000	2330	3010	3720
PL CROSS 2600	2600	2780	3460	4170
PL CROSS 3300	3300	3480	4160	4870

